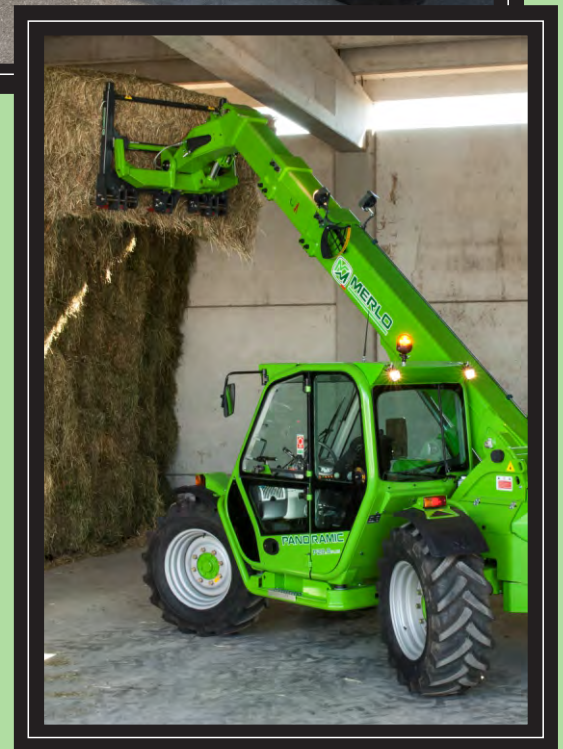
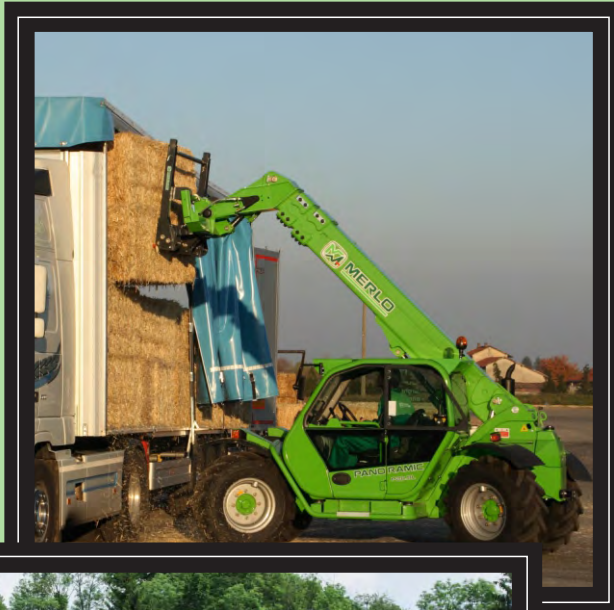


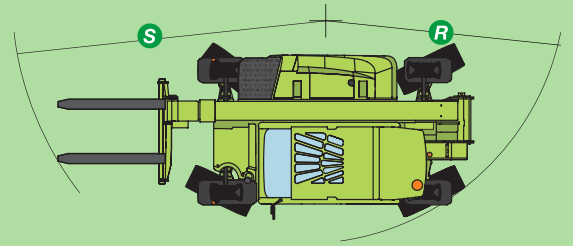
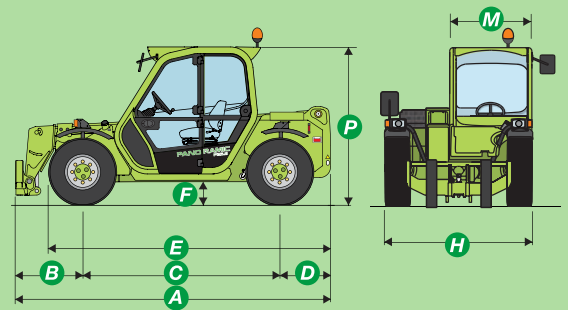
PANORAMIC P 30.8L / PLUS



MERLO
AUSTRALIA

KEY SPECIFICATIONS

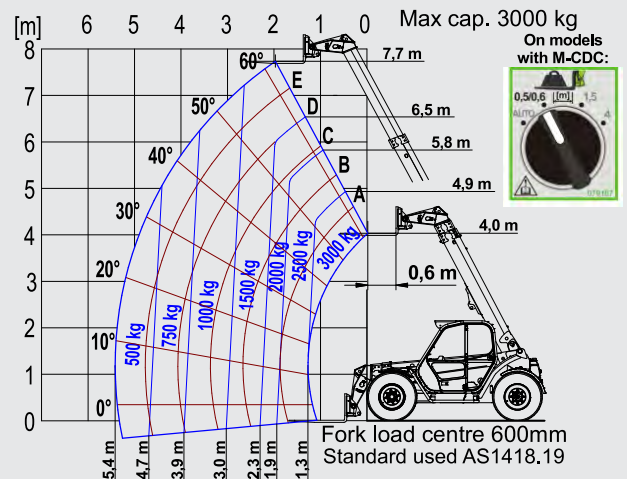
| | |
|---|-------------|
| Total weight unladen with forks (kg) | 6150 |
| Maximum load capacity (kg) | 3000 |
| Maximum lift height (m) | 7.7 |
| Maximum forward reach (m) | 5.4 |
| Lift height at maximum capacity (m) | 4.9 |
| Forward reach at maximum load capacity (m) | 1.3 |
| Load capacity at maximum height (kg) | 2000 |
| Load capacity at maximum forward reach (kg) | 500 |
| Engine (make/number of cylinders) | Kubota/4 |
| Tier IV Interim engine power (kW/hp) | 74.5/101 |
| Fuel capacity (l) | 100 |
| Maximum speed (kph) | 20/40(plus) |
| Hydraulic gear pump (bar-l/min) | 210/106 |
| Hydraulic oil capacity (l) | 85 |
| Electrical circuit (V) | 12 |
| Battery (Ah) | 100 |
| Cab compliant with ROPS/FOPS standards | ✓ |
| 4x1 Electro Mechanical joystick controls | ✓ |
| Tac-Lock hydraulic attachment coupling | ✓ |
| Auxiliary boom hydraulics | ✓ |
| Two standard forks (1200mm) | ✓ |
| Hydrostatic transmission | ✓ |
| Finger touch direction control | ✓ |
| Inching pedal for precise control | ✓ |
| Permanent 4 wheel drive | ✓ |
| Four wheel steering | ✓ |
| Dry type disc brakes on all wheels | ✓ |
| Automatically locking parking brake | ✓ |
| 405/70-20 tyres | ✓ |
| Cab ROPS (ISO 3471) FOPS (ISO3449) | ✓ |
| Four cab working lights (2f & 2r) | ✓ |
| 12V electrical on boom head | ✓ |
| Suspension seat | ✓ |
| Front window protection | ✓ |
| Full size cab with air conditioning | ✓ |
| Load Management System | ✓ |



DIMENSIONS

| | |
|--------|--------------|
| A (mm) | 4285 |
| B (mm) | 1000 |
| C (mm) | 2720 |
| D (mm) | 565 |
| E (mm) | 3825 |
| F (mm) | 385 |
| H (mm) | 2000 |
| M (mm) | 995 |
| P (mm) | 2150/2000(L) |
| R (mm) | 3700 |
| S (mm) | 4550 |

P30.8 Load Chart - Standard forks



1300 657325
merloaustralia.com.au